

Grapes Galore Willamette Valley wineries please planners and palates {30}

northwest

meetings + events

MEETINGSMAGS.COM // FALL 2019



Best of 2019

41 categories including

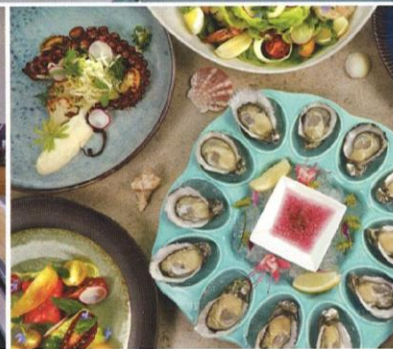
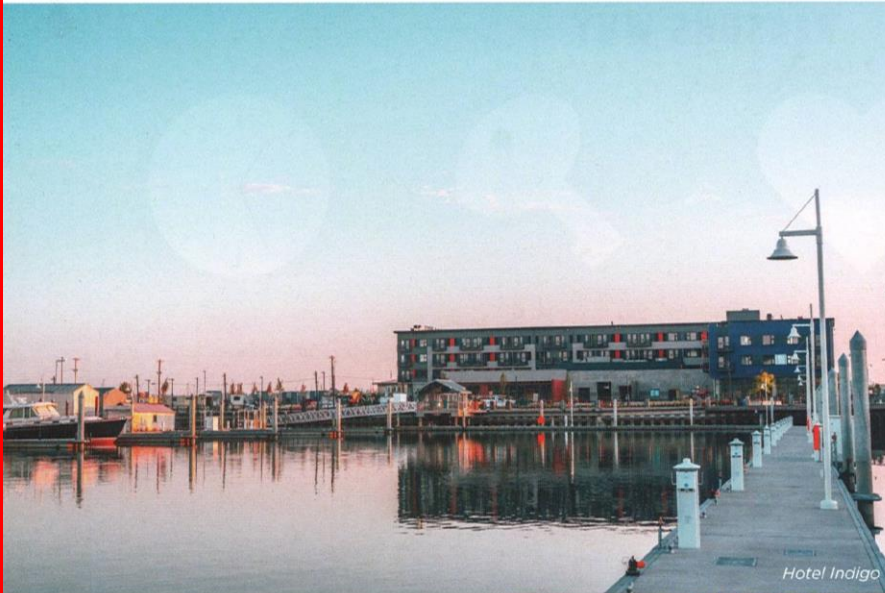
BEST CONVENTION/CONFERENCE
PROVIDER, HOTEL WITH MEETING SPACE
BREWERY/DISTILLERY



PLUS!

Meet the 3 industry
veterans in this year's
Hall of Influencers

{49}



Now Open

Everett, Washington, has welcomed the 142-room Hotel Indigo Everett. The new hotel is part of the 65-acre Waterfront Place development in Fisherman's Harbor on Port Gardner Bay. An InterContinental Hotels Group property, it is managed and operated by Seattle-based Columbia Hospitality and features the on-site restaurant Jetty Bar & Grille, a large indoor saline swimming pool, a fitness facility, the retail shop The Marketplace, and nearly 8,000 square feet of indoor meeting and event space and over 5,000 square feet of outdoor event space. The hotel also offers a 79-foot private yacht named Aqua Villa for groups of up to 55 looking for a unique event setting. indigoeverett.com

Seattle Southside Releases Annual Report

Seattle Southside Regional Tourism Authority (seattlesouthside.com) released its 2019 annual report this past summer. The destination

marketing organization for Seattle Southside (including the cities of SeaTac, Tukwila and Des Moines) reported that in 2018, tourists spent \$771 million in the region—an increase of 6.4 percent over 2017.

Highlights from the 2019 annual report include:

- » 5,130 people work in the tourism industry in Seattle Southside.
- » The Seattle Southside tourism industry generates \$79.2 million in local and state taxes.
- » The Seattle Southside Regional Tourism Authority's efforts directly generated \$291 million in visitor spending.
- » The Seattle Southside Regional Tourism Authority's sales team generated 11,329 hotel rooms booked for group, convention and conference business in 2018.

Ski-in/Ski-out on Schweitzer

Construction has begun on a 30-unit, ski-in/ski-out boutique hotel directly adjacent to Selkirk Lodge at Schweitzer Mountain Resort. Portland-based firm Skylab Architecture designed the building. It will be a state-of-the-art facility, featuring heavy-timber construction, incorporating reused materials, such as chairlift cables.

The as-yet-unnamed hotel will offer views of Lake Pend Oreille, a 50-seat restaurant, and a bar and outdoor patio with a fire pit. Plans also include a small co-working space, exercise area, communal "living room" and an outdoor spa.

The hotel is scheduled to open in the fall of 2020. schweitzer.com

Windstar heads "Down Under"

Boutique cruise line Windstar Cruises is heading to Australia and New Zealand for the 2020/2021 winter/spring season. The series of sailings will take place on what will be the newly renovated *Star Breeze*, an all-suite ship with balcony and ocean views, carrying just 312 guests.

The Australia and New Zealand cruises will be the second region in which Windstar launches its Signature Expeditions. The program delivers intimate, expedition-style adventures and active enrichment, with kayaks and Zodiacs launched from the ship in remote bays and hidden harbors. A team of expedition leaders sail on the cruise, sharing an academic understanding of the destination while guiding optional shore excursions. windstarcruises.com

PHOTOS: PORT OF EVERETT; HOTEL INDIGO SEATTLE EVERETT WATERFRONT